

---

# Central Gulf Coast Archaeological Society

A Chapter of the Florida Anthropological Society

[www.cgcas.org](http://www.cgcas.org)



## MONTHLY NEWSLETTER

September 2011



Editor: David Burns

---

## September Meeting

### Thursday September 15th

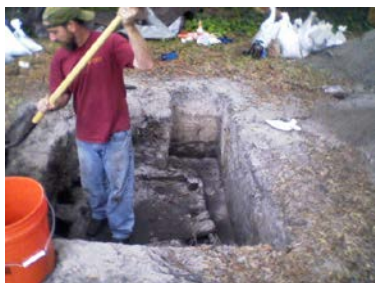
at

Weedon Island Preserve Cultural and Natural History Center

1800 Weedon Dr. NE, St. Petersburg, FL 33702

7 – 8 PM.

*Driftwood Community Archaeology Project: Survey Analysis of Pinellas Village, a Historic Settlement along Big Bayou*



*Jeff Moates and Rebecca O'Sullivan, West Central Region of Florida Public Archaeology Network*

During the summer and fall of 2010 FPAN CGCAS, and USF Field School students teamed up to survey the Driftwood neighborhood, located a few miles south of downtown St. Petersburg. Based on their memories and recollections of the past, neighbors provided us with a location map that identifies “areas of interest” to the history and prehistory of Pinellas County. Join us as we discuss our findings and what they reveal about Pinellas County’s past along Big Bayou.

Pre-register for this event by visiting [www.pinellascountyextension.org](http://www.pinellascountyextension.org), clicking the “Online Registration” button, and then choosing the “Weedon Island” tab. You may also call 727-453-6500.

## The 2011-2012 Lecture Series

9/16/2011 **Jeff Moates**, M.A. and **Rebecca O'Sullivan**  
Driftwood Community Archaeology Project: Survey Analysis  
of Pinellas Village, a historic settlement along the shores of  
Big Bayou.  
10/20/2011 **Michelle Williams**, Ph.D., Pathos and Plants:  
Medicinal Plants and Pathologies among the Windover  
Population.  
11/17/2011 **Gabriel Vail**, Ph.D. TBA  
12/15/2011 **Tom Pluckhahn**, Ph.D. Competition and  
Cooperation at Crystal River.  
1/19/2012 **Jason Wentzel**, M.A. Towards an Archaeology of  
Florida Tourism.  
2/16/2012 **Larry Clayton**, Ph.D. TBA  
3/15/2012 **James Strange**, Ph.D. TBA  
4/19/2012 TBA

## Kayak/Canoe the Alafia River



### SATURDAY, SEPT 10th, 9AM

Meet at: **Alafia River Canoe Rentals Inc.**, 4419 River Drive, Valrico, FL, (813) 689-8645.

**Directions:** From Tampa, take 301 south, left on Bloomingdale Ave., right on Co. Rd. 640/Lithia Pinecrest, then right on River Drive. Alafia Canoe Rentals will be on the left side of the road. This is where we will rent the boats; from here, passengers and boats will be transported to Alderman's Ford Park, a few miles up the river, where we will launch and paddle downriver. The river is shaded by large oaks and cedars most of the way down, nice current, 1 to 4 mph, water levels will be fairly high right now. The paddle is about 10 miles (about 3 1/2 hours) downriver, ending at Lithia Springs, where we can swim, relax, enjoy a sack lunch. We have reserved the only 7 kayaks available, but there are also plenty of canoes to rent. We will get a group discount, approximate rates as follows (the discount rate minus taxes): Kayaks: @\$23.00, Canoes: @\$35.00. Rental rate includes paddles and life jackets. **Please note, CASH ONLY accepted**

**SUZANNE WILLIAMSON and JOHN CAPOUYA**  
Presents

**SHADOW and REFLECTION: Visions of Florida's Sacred Landscapes**

OCTOBER 8 - NOVEMBER 27, 2011  
THE MOREAN ARTS CENTER, ST. PETERSBURG

OPENING RECEPTION  
OCTOBER 8, 2011, 5 - 7 p.m.



©Suzanne Williamson

Crystal River Archaeological State Park, 2010

**The Opening Reception and Following Events are Free and Open to the Public:**

**Family Day at the Morean: Saturday, October 8, 2011, noon to 3 p.m.**

Fun for all ages! Join us for interactive community events including face painting, Native American music, and the opportunity to contribute to a community mound. **Phyllis Kolianos** from Weedon Island Preserve Cultural and Natural History Center will give a brief talk and will guide participants through a hands-on "**Sifting through the Past**" activity with volunteers from the Center. This program is presented along with "**Shadow and Reflection: Visions of Florida's Sacred Landscapes**," an exhibition by photographic artist Suzanne Williamson and writer John Capouya.

**Funded by the Florida Humanities Council**

**Meaning, History and Legacy--Panel Discussion at the Morean: Thursday, October 27, 2011, 6 to 7:30 p.m.**

Collaborators **Suzanne Williamson** and **John Capouya** join local archaeologists to explore the meaning of Native American mounds, and how these mirrors of the past reflect our culture and communities today. Other topics will include the role of art in illuminating history and the conservation of Florida's cultural heritage. Featured panelists include **Richard Estabrook**, Florida Public Archaeology Network, Crystal River Preserve State Park; **Phyllis Kolianos**, Education Coordinator, Weedon Island Preserve Cultural and Natural History Center; **John Capouya**, Assistant Professor, University of Tampa; and **Suzanne Williamson**, photographic artist. This program is presented along with "**Shadow and Reflection: Visions of Florida's Sacred Landscapes**," an exhibition by photographic artist Suzanne Williamson and writer John Capouya.

**Funded by the Florida Humanities Council**

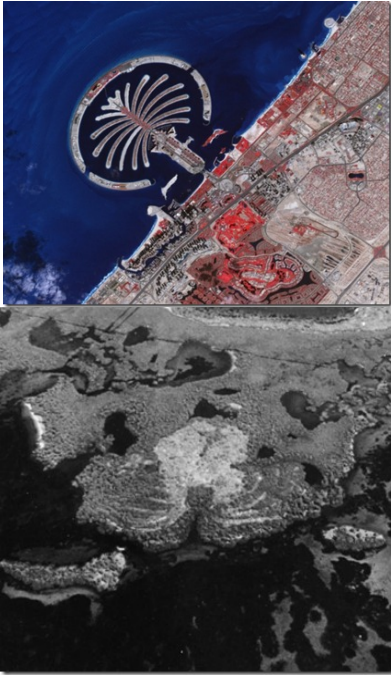
## National Archaeology Day

National Archaeology Day is a celebration of archaeology and the thrill of discovery. Throughout the month of October and on October 22<sup>nd</sup> in particular, the AIA and its societies throughout the United States and Canada will present archaeological programs and activities in over 100 cities for people of all ages and interests.

Visit <http://www.archaeological.org/NAD> for more information.

## Interesting

CGCAS member Lou Claudio was searching the web when this picture of the Palm Jumeirah resort in Dubai caught his eye (image top, below) and he got to wondering...what seemed so familiar about what he was seeing? He recalled the similarity to the "crab effigy" mound on Big Mound Key (image below, bottom). It brings up the question of what will archaeologists of the future argue about what Palm Jumeirah is or isn't?



## Pinellas by the Decades: A Centennial Celebration

### Speaking of History Lecture Series

Sundays at 2 p.m.

Free / Donations Welcome

Florida's 48<sup>th</sup> county was created on Jan. 1, 1912 as the Pinellas Independence Bill went into effect, establishing Pinellas County as a separate entity from Hillsborough County. As part of the centennial activities that are expected to take place between the fall of 2011 and the end of 2012, the Pinellas County Historical Society plans an engaging series of multidisciplinary lectures at Heritage Village titled "Pinellas by the Decades."

**September 11**

### **Pinellas by the Decades: 1842-1911 "From Punta Pinal to Peerless Pinellas"**

The opening lecture, *From Punta Pinal to Peerless Pinellas*, covers the years from 1842 to 1911 and takes place Sunday, Sept. 11, 2 p.m. in the Pinellas Room at Pinellas County's Heritage Village, 11909 125<sup>th</sup> St. in Largo.

Admission is free but donations support Heritage Village operations.

Local historian and past president of the Pinellas County Historical Society **Jim Schnur** traces milestones in Pinellas County from the Armed Occupation Act of 1842 up through the county's independence. Participants will learn about life in Pinellas County during the Civil War and Reconstruction, as well as the impact of the Orange Belt Railway in 1888. Historian Schnur will look at the early Pinellas communities, notable pioneer families and events leading up to Pinellas County's secession from Hillsborough.

**October 9**

### **Pinellas by the Decades: 1912-1921 "Independence, New Challenges, and New Opportunities"**

Winning separation from Hillsborough did not end the political struggles along the peninsula. Battles over the location of the county seat, the expansion of agriculture and truck farming in mid- and upper-Pinellas, the arrival of spring training baseball, and the early stages of the real estate boom carved out new communities and new identities. A devastating hurricane in October 1921 punctuated the end of this decade.

**November 13**

### **Pinellas by the Decades: 1922-1931 "The Land Boom and Distant Clouds on the Horizon"**

Although much of the real estate boom took place in St. Petersburg, ripples of economic activity covered the entire county. Frenzied speculation brought many investors and seasonal residents to the area, and the opening of the Gandy Bridge connected lower Pinellas with industrial activities across Tampa Bay. The boom began to wither by 1926, with its demise hastened by hurricanes in 1926 and 1928 that devastated portions of Florida and served as knock-out punches long before the rest of America entered the global depression in October 1929.

### **Thanks to all the Donors**

Thanks to all the people who have donated items to the AWIARE Research Center. We have received many pieces of furniture, kitchenware, and other items that are making the Research Center look like a home for both AWIARE and CGCAS. There are still a few things that we need and they are listed below:

computers, scanners, small copy machine, office chairs, large bookshelves, living room chairs, coffee table, lamps (floor and table), twin beds, small chest of drawers, small dining room table & chairs, silverware, vacuum cleaner, and a lawn mower.

If you have any of these items in good and working condition and would like to donate them to AWIARE, please contact Bob Austin at [roc.doc@verizon.net](mailto:roc.doc@verizon.net). All donations are tax deductible.

Thank you!

### CGCAS Officers/Directors

President	Bob Austin	P.O. Box 2818, Riverview, FL 33568	(813)677-2280
Vice Pres.	Chris Hardy	11924 Cypress Crest Cir., Tampa, FL 33626	(813)920-2353
Secretary	Linda Allred	5251 42 <sup>nd</sup> Ave N., St. Petersburg, FL 33709	(727)526-7885
Treasurer	Cheryl Shaughnessy	6100 62 <sup>nd</sup> Ave. N, Lot63, Pinellas Park, 33781	(727)742-6758
Directors	Marcie Connors	19327 Wind Dancer St., Lutz, FL 33558	(813)920-4198
	Jeff Moates	7924 24 <sup>th</sup> Ave. W. Bradenton, FL 34209	(813)396-2325
	Sheila Stewart	2130 Burlington Ave. N., St. Petersburg, FL 33713	(727)894-2832
	Cindy Martin	3412 Forest Bridge Cir., Brandon, FL 33511	(813)654-4828
	Dawn Hayes	P.O. Box 292636, Tampa, FL 33687	(813)748-6612
Membership	Karin Lovik	1225 Jeffords St. Apt. 225A, Clearwater, FL	(727)543-6912
Web Master	Chris Hunt	10706 Preserve Lake Dr. # 312, Tampa, FL	(813)784-4289
Newsletter	David Burns	15128 Springview St, Tampa, FL 33624	(813)968-7910
		e-mail: daveburns@prodigy.net	
Editorial Assistants	Bob Austin and Dorrine Burns		

## The Society

Central Gulf Coast Archaeological Society (CGCAS) is an association of amateur and professional archaeologists and concerned citizens dedicated to the preservation and interpretation of Florida's great cultural heritage. CGCAS is a chapter of the Florida Anthropological Society (FAS) and is a state chartered non-profit organization. All contributions are tax deductible.

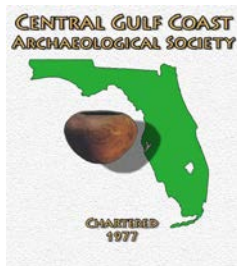
## Membership

Membership is open to anyone with a sincere interest in the cultural past of Florida and who is dedicated to the understanding and preservation of that heritage

Amateurs, professionals and concerned citizens are welcomed as members. Membership is yearly and all dues are payable in January. Contact Karin Lovik, 1225 Jeffords St., Apt 225A, Clearwater, FL.

### Dues

Regular	\$20.00
Student	10.00
Family	25.00
Life	150.00



### **Central Gulf Coast Archaeological Society**

P.O. Box 1563,  
Pinellas Park, FL 33780-1563

