

---

# Central Gulf Coast Archaeological Society

A Chapter of the Florida Anthropological Society

[www.cgcas.org](http://www.cgcas.org)



## MONTHLY NEWSLETTER

September 2009



Editor: David Burns

---

## September Meeting

### Thursday September 17th

at

**Weedon Island Preserve Cultural and Natural History Center  
1800 Weedon Dr. NE, St. Petersburg, FL 33702**

**7 – 8 PM.**

Current Underwater Research off Florida's West Coast



*C. Andrew Hemmings, Ph.D., University of Texas*

Underwater archaeological research conducted over the last two years by a team lead by James Adovasio and Andy Hemmings has utilized a wide array of leading edge technology in their hunt for now submerged archaeological sites in the Northeastern Gulf of Mexico. Over 2000 targets of interest have been identified and they are now in the process of testing the most promising for archaeological remains.

Lengthy portions of the relict St. Marks-Aucilla and Suwannee River systems have been found and sites along their edges have been visited by scuba divers in several areas. Results of these investigations will be presented with some discussion of equipment utilized and hazards encountered in this work.

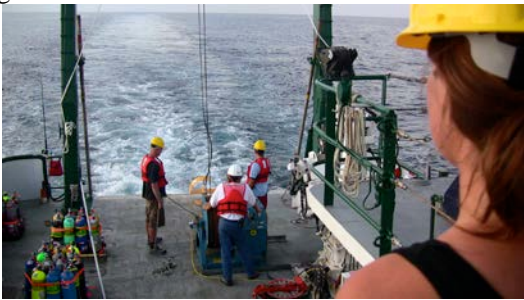
Andy Hemmings is a Paleoindian Archaeologist with a particular interest in the underwater archaeology of Florida. He received his bachelors from the University of Arizona and graduate degrees from the University of Florida. A recent returnee to Florida he is currently affiliated with Mercyhurst College of Erie, PA.

This program is co-sponsored by CGCAS and the Weedon Island Preserve Cultural and Natural History Center and is free and open to the public. Pre-registration is requested. Call 727-453-6500 to register and for further information.

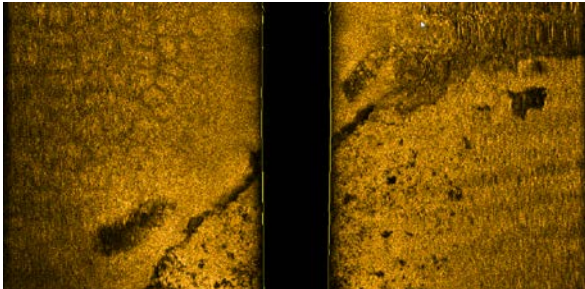
## Underwater Expedition Searches for Evidence of Early Americans

Our first speaker of the new Speaker Series is C. Andrew Hemmings, Ph.D. He took part in an underwater archaeological survey co-led by Mercyhurst College archaeologist James Adovasio along Florida's Gulf Coast this summer.

The signature expedition of the National Oceanic and Atmospheric Administration (NOAA) office of Ocean Exploration and Research began in the summer of 2008. Adovasio and Hemmings identified and mapped the buried river channels of the St. Marks-Aucilla and Suwannee river channels that could potentially help document the late Pleistocene landscape. This year they further traced the river systems along whose prehistoric people may have populated and identified raw material that they may have used in tool making.



*Crew preparing to deploy side scan-sub bottom profiler towfish*



*A side scan sonar image showing a small ridge in the limerock*

Researchers electronically mapped the modern sea floor with a side scan sonar device and created images of the layered sediments below the seafloor surface with a sub-bottom profiler. Using GPS technology, the team selected dive locations based on an understanding of what the surface should look like, and what was hidden below the surface adjacent to the old river channels.

On the peninsula where the relict Suwannee River intersects another ancient system, divers were able to collect a 1m sediment core but were unable to complete a lengthier search because the water neared the 130 feet maximum depth for this year's dive. The team plans on returning to this spot next year and using a dredge to lift away the silt and see if there is an archaeological site at this confluence.

Stay tuned as more exciting discoveries are sure to be found during these expeditions. Plan on attending this exciting and important lecture.

## CGCAS Lecture Series for 2009-2010

We have another interesting line up of speakers for the coming year. All these presentations will be at the Weedon Island Preserve Cultural and Natural History Center. The dates are the second Thursday of the month with the lectures beginning at 7 pm. They are free and open to the public. Further information will be presented in future newsletters regarding each month's presentation.

**September 17, 2009** – *C. Andrew Hemmings, Ph.D.*, Current Underwater Research off Florida's West Coast

**October 15, 2009** – *Steve Koski*, Recent Exploration on the 27-meter Ledge at Little Salt Spring

**November 19, 2009** – TBA

**December 17, 2009** – *Asa Randall, MA*, Rethinking the Significance and Long-Term Histories of Archaic Shell Mounds along the Middle St. Johns River

**January 21, 2010** – *David Steadman, Ph.D.*, Using Prehistoric Archaeology to Study Modern Biodiversity

**February 18, 2010** – *Bob Carr, MA*, Bahamian and Florida Cultural Interactions in Prehistory through the Early 19<sup>th</sup>-Century

**March 18, 2010** – *Bill Marquardt, Ph.D.*, Shell Mounds in the Southeastern U.S.: Middens, Monuments, Temple Mounds, Rings, or Works?

**April 15, 2010** – *Alison Elgart, Ph.D.*, Life and Death in Southeastern Florida during the Late Archaic

## Bayshore Homes Up-date

After finishing the excavation at the home of Mac and Faye Perry, we have taken some time off before processing the material recovered there.

In the near future we will begin washing and sorting both the items from the excavation and also the column sample. We will be doing this again at the Weedon Island Center on Saturday mornings. You will be receiving notice of when this will begin. If you have not been a part of this before, you are invited to join us.

## Maximo Point Help Needed

On Saturday September 19, 2009, Florida Public Archaeology Network (FPAN) under the direction of Jeff Moates, will be profiling a long section of exposed midden at Maximo Beach Park in St. Petersburg. The city is doing some work there to remove vegetation and FPAN will be

drawing profiles of the exposed midden. It's a fairly large project and he needs our help, so anyone who is interested should plan on coming out.

## Time Sifters Lecture Series

### *Traces of Our Past: Florida's History through Archaeology*

Time Sifters and New College's Public Archaeology Lab (PAL), with funding from the Florida Humanities Council, will present five lectures at New College on topics addressing Florida Archaeology and Anthropological issues. The first lecture is September 16<sup>th</sup>, at the **Mildred Sainer Pavilion**, 5313 Bay Shore Rd, Sarasota, FL.

**September 16, 6pm:** *Kenneth E. Sassaman, University of Florida* Coping with Rising Water in Florida for 12,000 Years

**November 18** - *Jerry Milanich, Florida Museum of Natural History*, Archaeology in the Archives: The Seminole Indian Photographs of Julian Dimock, 1905-1910

**January 20** - *Brent Weisman, University of South Florida*, Archaeology of the Unconquered People

**March 17** - *Barbara Purdy, University of Florida* Ancient Art of Florida's Native People

**May 19** - *William Lees, Florida Public Archaeology Network* Microns and Monuments: Connecting with Civil War Florida

## Members Speaking Elsewhere

The Southwest Florida Archaeological Society (SWFAS) are presenting programs featuring CGCAS members.

On Wednesday, September 16, 2009, *Jeff Moates*, Director of the West Central Regional Center of FPAN, will be talking about shipwrecks in the Florida Keys. The 18+ shipwrecks in the Florida Keys investigated between 2004-2009 span Florida's historic time period. Researchers have documented wrecks that are the remains of the plate fleet disaster of 1733 through to more modern times.

This meeting of SWFAS will be held at the Bonita Springs Community Center.

In October, *Richard Estabrook*, Director of the FPAN Center at the Crystal River Preserve State Park, will discuss the Hopewellian artifacts recovered from the famous Crystal River site in coastal Citrus County. He will also discuss how large coastal sites may have acted as "gateways" for the movement of goods and ideas from the heartland of North America out of sites deep in the Florida interior.

The date and location are to be announced.

## Class on Native American History and Culture to be Taught

A class entitled "Native American History and Culture as illuminated by Archaeology and Anthropology"

will be taught by Roger Block, Ph.D. starting in late September. It will be a six week, twelve hour course that will be offered in the evening at both St. Petersburg College and Eckerd College.

The St. Petersburg course is on the Gibbs Campus with the location to be announced. The cost of the class is \$45.00. The class number for registration is AAP 0610 #4620 and will go from 7:00 – 9:00 PM on Tuesdays Sept 29<sup>th</sup>, Oct 6, 13, 20, 27, Nov. 3.

The Eckerd College class will on Wednesday's Oct. 14, 21, 28, Nov. 4, 11, 18. To register use CEC #2572 and it also goes from 7:00 – 9:00 PM. For OLLI members the cost is \$54.00, and for non-members it's \$74.00.

## T-shirt Up-date

It has been observed that some of the new CGCAS t-shirts shrink after washing. So it has been recommended that when you order a shirt order the next size up to hopefully prevent you from thinking you have to go on a diet.

## Weedon Island Cleanup Calls for Volunteers

On October 10, 2009, the Tampa Bay Estuary Program is seeking volunteers for the Give a Day for the Bay cleanup at Weedon Island Preserve from 8:30 to 11:30 a.m.

All volunteers will receive a free lunch and a Tampa Bay Estuary Program reusable water bottle.

Winds and tides have deposited a variety of floating trash among the mangroves lining the shore. Help is needed to gather up the plastic bottles, tennis balls, Styrofoam debris, glass and more.

CGCAS is planning on taking part in the cleanup and hope to see you there. As a note, you should plan on getting at least your feet wet that day so bring old sneakers or boots and wear your CGCAS t-shirt.

## 2010 FAS Annual Meeting

The Annual Meeting in 2010 will be hosted by the Southwest Florida Archeological Society (SWFAS) in Ft. Myers from May 7-9, 2010. Further information on this meeting will be presented in future newsletters as well as on the FAS website [www.fasweb.org](http://www.fasweb.org)

## FAS Membership

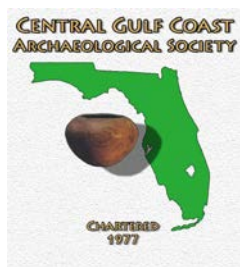
The Florida Anthropological Society (FAS) is open to persons interested in anthropology, archaeology, preservation of cultural resources and community education. Membership is made up of both professional and avocational archaeologists. Benefits of membership include the journal *The Florida Anthropologist*, the *FAS Newsletter* and participation in the annual meeting in May. More information and membership forms can be found on the web site [www.fasweb.org](http://www.fasweb.org) or by writing to the Membership Secretary at P.O. Box 13191, Pensacola, FL 32591. Dues are: Student - \$15; Regular and Institutional - \$30; Family - \$35; Sustaining - \$100; Patron - \$500; Benefactor - \$2500 or more.

### CGCAS Officers/Directors

President	Bob Austin	P.O. Box 2818, Riverview, FL 33568	(813)677-2280
Vice Pres	Shanna Drwiega	917 W. Woodland Ave, Tampa, Fl 33603	(813)383-9182
Secretary	Cindy Martin	3412 Forest Bridge Cir. Brandon, Fl 33511	(813)654-4828
Treasurer	Cheryl Shaughnessy	6100 62 <sup>nd</sup> Ave. N, Pinellas Park, 33781	(727)772-6758
Directors	Bart McLeod	2412 Butte Ave., New Port Richey, FL 34653	(727)815-8749
	Marcie Connors	19327 Wind Dancer St., Lutz, FL 33558	(813)920-4198
	Karin Lovik	1225 Jeffords St. Apt 225A, Clearwater, FL	(727)543-6912
	Jeff Moates	624 19 <sup>th</sup> St. W, Bradenton, FL 35205	(813)396-2325
	Linda Allred	5251 42 <sup>nd</sup> Ave N., St. Petersburg, Fl 33709	(727)526-7885
	Chris Hardy	1668 Nantucket Court, Palm Harbor, Fl 34683	(727)733-3636
Membership	Karin Lovik	1225 Jeffords St. Apt. 225A, Clearwater, Fl	(727)543-6912
Web Master	Diane Kloetzer	5380 Memorial Highway, Apt. 701, Tampa, Fl 33615	(813)281-9662
Newsletter	David Burns	15128 Springview St, Tampa, FL 33624	(813)968-7910
		e-mail: <a href="mailto:daveburns@prodigy.net">daveburns@prodigy.net</a>	
Editorial Assistants	Dorrine Burns and Bob Austin		

## The Society

Central Gulf Coast Archaeological Society (CGCAS) is an association of amateur and professional archaeologists and concerned citizens dedicated to the preservation and interpretation of Florida's great cultural heritage. CGCAS is a chapter of the Florida Anthropological Society (FAS) and is a state chartered non-profit organization. All contributions are tax deductible.



### **Central Gulf Coast Archaeological Society**

P.O. Box 1563,  
Pinellas Park, FL 33780-1563

## Membership

Membership is open to anyone with a sincere interest in the cultural past of Florida and who is dedicated to the understanding and preservation of that heritage

Amateurs, professionals and concerned citizens are welcomed as members. Membership is yearly and all dues are payable in January. Contact Karin Lovik 1225 Jeffords St., Apt 225A, Clearwater, FL.

#### Dues

Regular	\$20.00
Student	10.00
Family	25.00
Life	150.00

