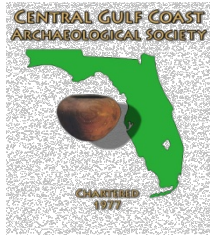

CENTRAL GULF COAST ARCHAEOLOGICAL SOCIETY

A CHAPTER OF THE FLORIDA ANTHROPOLOGICAL SOCIETY
WWW.CGCAS.ORG



MONTHLY NEWSLETTER
JULY, 2013

36 YEARS OF PROMOTING FLORIDA'S RICH HERITAGE

EDITOR: BECKY O'SULLIVAN

SUPPORT HISTORIC PRESERVATION IN FLORIDA; LET YOUR VOICE BE HEARD AT DHR REGIONAL MEETINGS

A series of regional meetings are being sponsored in 2013 by the Florida Department of State's Division of Historical Resources to provide citizens an opportunity to review the state's new comprehensive historic preservation plan. Participants will discuss how the plan can guide efforts to work together to preserve Florida's history and historical, archaeological, and cultural resources.

The plan is posted online at: www.flheritage.com/preservation/comprehensive. Meetings will be facilitated by staff from the Division of Historical Resources, Bureau of Historic Preservation. For more information, get in touch with the local contacts below, or Barbara Mattick, Deputy State Historic Preservation Officer for Survey & Registration, at 1-800-847-7278, or Barbara.Mattick@DOS.myflorida.com

This is your chance to let your voice be heard in regards to how archaeological sites and historical resources should be managed within the state of Florida. Be sure to mark your calendar, and I hope to see you all there. In our area, the closest meetings will be held in Orlando and Sarasota:

Wednesday, August 14 from 4-6 PM
Orlando City Hall, 9th Floor
400 S. Orange Avenue, Orlando
Contact: Richard Forbes, 407.246.3350

Thursday, August 15 from 3-5 PM
UF/IFAS Extension Sarasota County
aka The Green Building at Twin Lakes Park
6700 Clark Road, Sarasota
Contact: Lorrie Muldowney, 941.861.6883

JUNIOR ARCHAEOLOGIST CAMP AT WEEDON ISLAND

During the last weeks of June and July, CGCAS, the Alliance for Weedon Island Archaeological Research and Education (AWIARE), and the Florida Public Archaeology Network (FPAN) teamed up to sponsor the Junior Archaeologist summer camp which is held each year at the Weedon Island Preserve.



CGCAS members came out a few days before the campers to open a new unit at the Weedon Island Preserve.

CGCAS members assisted in opening up a 1x1m unit out at the Preserve so that campers could get some first-hand experience of an archaeological excavation. During both sessions, the “Jr Archaeologists” were excited to apply all the lessons they had learned during the week of camp on a real archaeological site. With the help of the CGCAS crew and FPAN staff they were able to learn proper excavation techniques and even had to take field notes on the site and what they had recovered. Despite the hot and steamy weather, both the campers and adults had fun getting their hands dirty and exploring another small piece of the rich history of Weedon Island. We look forward to a new crop of little archaeologists out at Weedon Island next year!



“Dr. Bob” helps one of the Jr Archaeologists measure depths throughout the unit before getting started.



Dave Burns helps the kids work on their screening technique.

CGCAS SPEAKER SERIES

Mark you calendar, the schedule is set for the CGCAS 2012-2013 Speaker Series! As in years past, talks will be the third Thursday of each month, September to April, from 7-8 PM at the Weedon Island Preserve Cultural and Natural History Center. We have a great slate of talks lined up for this year, and our first four speakers are listed below:

September 19th:

Nate Lawes, M.A., University of Florida
“You Have Guns and so Have We...”: An Ethnohistoric Perspective on the Evolution of Seminole Combat Behaviors

October 17th:

Maranda Kles, Ph.D., University of Florida
The Biological and Cultural Variation in the Weedon Island Complex and Manasota Culture

November 21st:

John Arthur, Ph.D., USF St. Petersburg
The Archaeology of Beer: A Look from Ethiopia and Beyond

December 19th:

Jim Dunbar, Ph.D., Private Consultant
A Revised Paleoindian Projectile Point Typology

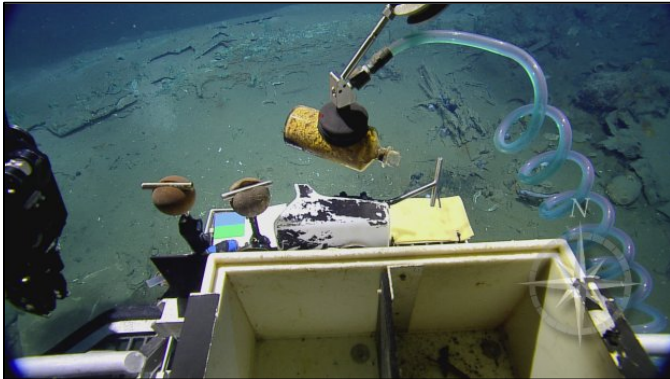
UNDERWATER ARCHAEOLOGY FROM THE COMFORT OF YOUR HOME

If you haven’t already done so, make sure to take some time over the next few weeks to check out a team of archaeologists and natural scientists in action at the bottom of the Gulf of Mexico. You don’t need a wetsuit to see their work recording the natural and cultural environment on the sea floor, just an internet connection. Live video from their ROVs is streaming during the day and into the night at www.nautiluslive.org.

From June through November of 2013, Exploration Vessel Nautilus will explore the Gulf of Mexico and the Caribbean Sea. Researchers aboard Nautilus will be mapping the geological, biological, archaeological and chemical aspects of

the sea floor to depths of around 2,000 meters. Throughout the expedition, the crew will be sharing their discoveries live on the web via a video link. In addition to seeing their work you can also hear researchers talk in real-time about what they are finding.

The 2013 expedition season will begin off the US coast in the Gulf of Mexico. Subsequent cruise legs will bring the ship and her crew to the Cayman Islands, Puerto Rico, Montserrat, Grenada and Trinidad & Tobago in the Caribbean Sea.



The ROV Hercules is seen recovering a bottle filled with a yellowish substance, possibly ginger, which may have helped sailors who were seasick.

The 2013 Nautilus Exploration Program is made possible through partnerships with the National Oceanic and Atmospheric Administration (NOAA), Ocean Exploration Trust (OET) Bechtel, Sea Research Foundation, National Geographic Society, Office of Naval Research, and the University of Rhode Island. Make sure to keep checking back to view highlights of their exploration!

POTTERY IDENTIFICATION WORKSHOP AT WEEDON ISLAND

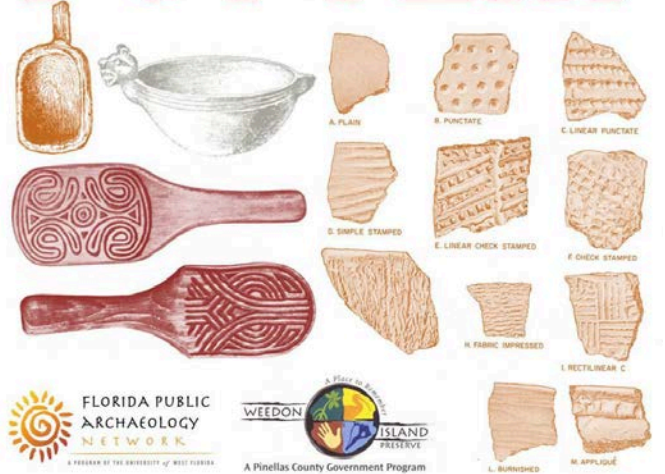
Pottery was a vital part of life in Florida for over 4,000 years, but it is also an important clue for archaeologists today. Learn to identify different prehistoric pottery types from around Florida and the ways archaeologists use them to learn about people in the past. USF grad student and prehistoric pottery expert extraordinaire Kassie Kemp will be on hand along with staff from the West Central office of the Florida Public Archaeology Network to teach you how to ID some common prehistoric pottery types from throughout Florida. A pottery

making activity will also be provided for kids. This program is free and appropriate for all ages and levels. Follow the link below to register or for more information.

To Register:

<http://www.eventbrite.com/event/7538031455/eorg>

ARCHAEOLOGY WORKS: POTTERY



Where:

Weedon Island Preserve
1800 Weedon Dr NE
St. Petersburg, 33702

When: Saturday, September 7, 2013
10:00 AM to 12:00 PM

AWIARE OFFERS HANDS-ON WEEDON WORKSHOPS IN OCTOBER

Saturday, October 19, 2013

The Alliance for Weedon Island Archaeological Research and Education (AWIARE) is offering two workshops:

- Florida Native Plant Use by Florida's Prehistoric People, presented by Florida historian, Elizabeth Neily;
- Stone and Shell Tool Technology, presented by Bill Hicks, recognized nationally as an expert in prehistoric stone and shell tool manufacture.



Weave a basket or knap a stone or shell tool with the instructors. Both workshops are offered to the general public. Participants must be 18 years or older. Registration fee is \$45.00 per workshop. Each workshop will be conducted from 10AM until 3PM at the AWIARE Archaeological Research Station, 1500 Weedon Island Dr NE, St. Petersburg, FL 33702. Bring your bag lunch. Bottled water, gloves and safety glasses will be provided. Workshops are limited to 10 persons each and the deadline for registration is Wednesday, October 9th. Please print out this ad and payment with your class choice circled and mail to AWIARE at the address above. Only checks or money orders accepted. Please check the AWIARE website for current openings (www.awiare.org). In the event of inclement weather, Saturday, 10/26, is established as an alternate date.

PINELAND FIELDTRIP

We had to put it off for a while, but our next CGCAS fieldtrip is set. On October 12, 2013 at 1pm we will get a tour of the amazing Pineland site on Pine Island, in Lee County, near Fort Myers. Pineland is home to the Randell Research Center, and is also listed on the National Register of Historic Places. From their website, "Pineland was a Calusa Indian town for over 1,500 years. Enormous shell mounds still overlook Pine Island Sound. Remains of many centuries of Indian village life blanket the old pastures and groves. Remnants of an ancient Calusa canal that reached 2.5 miles across Pine Island sweep through the complex. Sand burial mounds still stand in the woods. Historic structures of Florida's early pioneer period still exist. Native plants and animals characteristic of coastal hammocks, pinelands, wetlands, and shell mounds are abundant."



An aerial view of the Calusa Heritage Trail at Pineland.



Pineland and the Randell Research Center are located just to the west of Cape Coral.

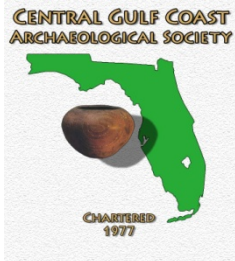
For those interested in carpooling to the site, we plan to meet at a carpool parking lot in St. Petersburg so that we can leave together for Pineland by 9 AM. The lot is located east of I-275 off the 22nd Ave N exit (Exit 24). To enter lot, head east on 22nd Ave N, turn left onto 19th Street N, then take the first left into the parking lot. Bring a lunch, or stop for something quick along the way, and then after the tour we plan to get dinner together as a group. For those who are interested in making it a two-day trip, plans are in the works to reserve rooms at a local hotel for those who are interested. A side trip to Historic Spanish Point in Osprey could also be organized on the way back for those choosing to stay overnight on Saturday. Contact Bob Austin at bob@searchinc.com for more information on carpooling or hotel reservations. Should be a fun trip!

CGCAS OFFICERS\DIRECTORS

President	Chris Hunt	315 N Lauber Way, Tampa, FL 33609	(813)784-4289
Vice Pres.	Dawn Hayes	P.O. Box 292636, Tampa, FL 33687	(813)748-6612
Secretary	Linda Allred	5251 42 nd Ave N, St. Petersburg, FL 33709	(727)526-7885
Treasurer	Cheryl Shaughnessy	6100 62 nd Ave N, Lot 63, Pinellas Park, FL 33781	(727)742-6758
Directors	Marcie Connors	19327 Wind Dancer St, Lutz, FL 33558	(813)920-4198
	Jeff Moates	7924 24 th Ave W, Bradenton, FL 34209	(813)396-2325
	Becky O'Sullivan	328 S. Edison Ave, Tampa, FL 33624	(813)909-3034
	Bob Austin	P.O. Box 2818, Riverview, FL 33568	(813)677-2280
	Chris Hardy	11924 Cypress Crest Cir, Tampa, FL 33626	(813)920-2353
Membership	Cheryl Shaughnessy	6100 62 nd Ave N, Lot 63, Pinellas Park, FL 33781	(727)742-6758
Web Master	Chris Hunt	315 N Lauber Way, Tampa FL 33609	(813)784-4289
Newsletter	Becky O'Sullivan	E-mail: rosulliv@usf.edu	
Editorial Assistants		Bob Austin, Dave Burns	

THE SOCIETY

The Central Gulf Coast Archaeological Society (CGCAS) is an association of amateur and professional archaeologists and concerned citizens dedicated to the preservation and interpretation of Florida's great cultural heritage. CGCAS is a chapter of the Florida Anthropological Society (FAS) and is a state chartered non-profit organization. All contributions are tax deductible.



MEMBERSHIP

Membership is open to anyone with a sincere interest in the cultural past of Florida and who is dedicated to the understanding and preservation of that heritage.

Amateurs, professionals and concerned citizens are welcomed as members. Membership is yearly and all dues are payable in January. Contact Cheryl Shaughnessy at P.O. Box 1563 Pinellas Park, FL33780

Dues	
Individual	\$20.00
Student	\$10.00
Family	\$25.00
Life	\$150.00

**CENTRAL GULF COAST
ARCHAEOLOGICAL SOCIETY**
P.O. Box 1563
PINELLAS PARK, FL