
Central Gulf Coast Archaeological Society

A Chapter of the Florida Anthropological Society

www.cgcas.org



MONTHLY NEWSLETTER

July 2010



Editor: David Burns

Cool Summer Kayak Trip!

Saturday July 31, 2010

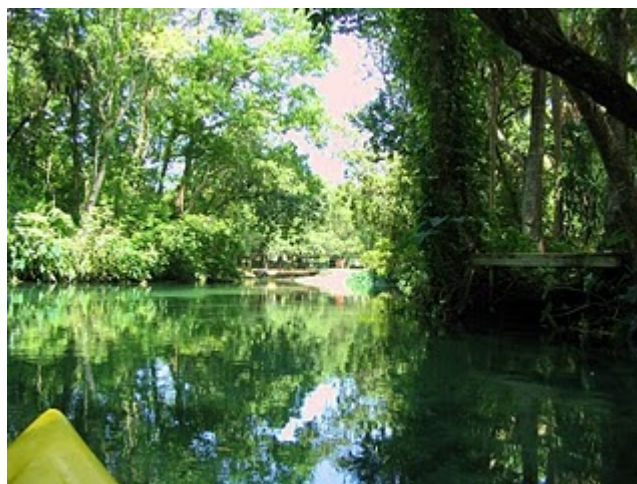
at

Weeki Wachee Springs State Park

6131 Commercial Way

Weeki Wachee, Fl

10AM-3PM



On this Saturday kayak trip you will have the great opportunity to paddle 2 ½ hours downstream at Weeki Wachee Springs State Park. A State Park van will meet you at Roger's Park for the ride back to your cars.

We will meet at 10:00am at Weeki Wachee Springs Water Park on HWY 19 and SR-50. Kayaking Adventures is located on the southwest corner of the parking lot.

A single kayak or canoe can be rented for the day for \$30.00. A tandem kayak is \$35.00. These prices include life vest, paddles, and return trip. If you bring your own kayak/canoe you will pay only a \$15.00 launch/return trip fee.

The spring is a cool 74 degrees with spring-fed waters of the Weeki Wachee River. Lunch and libations are available at the end of the paddling at Roger's Park. However, you may want to plan on bringing water along as you leisurely paddle down river.

If you plan on joining us, please contact Linda Allred at 727-526-7885 so that enough canoes and kayaks can be reserved.

Weeki Wachee Spring

Weeki Wachee Springs Waterpark is Florida's only natural spring family water park. Located on the Gulf Coast of Florida, approximately 45 minutes north of Tampa, on U.S. 19 at the Intersection of State Road 50, the park is set on 200 tropical acres that features a wilderness river cruise, Petti-Goat Junction (a live pygmy goat petting zoo), water rides and flumes, volley ball courts, white sand beaches, and of course, the famous underwater live mermaid shows.

Weekiwachee is a Seminole Indian word meaning "little spring" or "winding river". The Weeki Wachee River flows 12 miles through pristine wilderness and empties into the Gulf of Mexico. The actual spring is a surfacing point of an underground river; it measures 100 feet across and pumps out 170 million gallons of 98.7 percent pure water every 24 hours. The year round temperature of the water is a comfortable 74.2 degrees.

CGCAS Picnic 2010

This year's picnic was held at Lake Seminole Park on Saturday June 26th. We had a great turn out, nice weather and the usual delicious food.

After enjoying the great food we had talks by Mac Perry and Tom Connors. We then had a raffle of many door prizes and then a tour of the park led by Mac Perry.

The election of new officers and directors was held and the gavel was passed to Karin Lovik, our new President.



Incoming and Outgoing Presidents



Dee Dee and others enjoying the day

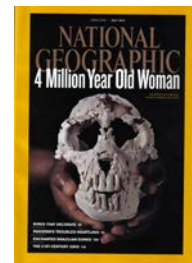
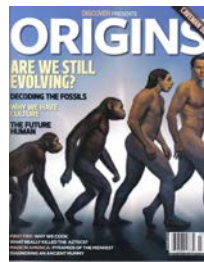


Tom Connors Wondering "Are they done yet?"

Weedon Island

The budget for Pinellas County was released on July 13th and Weedon Island appears to be spared. It is not official but it appears that the Center will remain open. Details on the hours, staffing and other matters regarding CGCAS meetings will be forthcoming. It is possible that there will be an admission charge to get into the preserve. On a sad note, Grant Craig, the lone staff member at the Weedon Center, will be leaving on September 30th, a victim of the budget cuts.

In the News and in Print

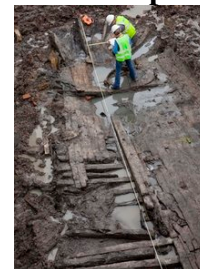


The publications above have been recently released and can be obtained at bookstores.

Discover magazine's Special edition "Origins" is an overview of the current research on the origins of the human species consisting of many articles written by noted scientists working in this field. These articles are divided into three groups: Origins of Man; Origins of Civilization; and, Origins of the Future. This issue will be on newsstands until September 20, 2010 at a cost of \$7.99.

National Geographic's July 2010 issue also has two articles relating to human origins. The first article entitled "The Evolutionary Road" discusses the discoveries in the Middle Awash area of Ethiopia. Each of our hominid ancestors has lived, died and been buried there for six million years. In typical National Geographic style, there are excellent photos, maps, and pictures showing how we became human. The second article discusses how bipedalism developed over the last 4.4 million years. Again, National Geographic can be purchased at the newsstand.

Work to Free Buried Ship Hull at WTC Site



NEW YORK – The ship was buried as junk two centuries ago — landfill to expand a bustling little island of commerce called Manhattan. When it re-emerged this week, surrounded by skyscrapers, it was an instant treasure that popped up from the mud near ground zero.

A 32-foot piece of the vessel was discovered in soil 20 feet under street level, amid noisy bulldozers excavating a parking garage for the future World Trade Center. Near the site of so many grim finds — Sept. 11 victims' remains, twisted steel — this one was as unexpected as it was thrilling.

Historians say the ship, believed to date to the 1700s, was defunct by the time it was used around 1810 to extend the shores of lower Manhattan.

"A ship is the summit of what you might find under the World Trade Center — it's exciting!" said Molly McDonald, an

archaeologist who first spotted two pieces of hewn, curved timber — part of the frame of the ship — peeking out of the muddy soil at dawn on Tuesday.

Opening of the Art Work of Hermann Trappman

On Saturday July 10th, a special exhibit of the artwork of Hermann Trappman opened at the Tampa Bay History Center. Several CGCAS members attended this event and set up a table for distribution of information on CGCAS. Thank you Karin Lovik, Marcie Connors, Chris Hardy, and Dee Dee Dix for taking part. See the information on the exhibit below.



Karin, Hermann, and Marcie



Caitlyn, Rae, and Zaida of FPAN



Dee Dee, Karin, and Marcie



Obscured By Time: The Magic of Florida, featuring the art of Hermann Trappman July 10- September 26, 2010

The History Center welcomes *Obscured By Time: The Magic of Florida*, an exhibition featuring the artwork of Hermann Trappman.

This exhibition details the natural history of Florida through Trappman's compelling paintings, artifact replicas, and examples of the resources utilized. A self-taught artist, Trappman's work offers a glimpse of early Florida, its people, and geography prior to European contact in the 1500s.

Born in Rochester, New York to German immigrant parents, Hermann Trappman moved to St. Petersburg, Florida when he was just eight years old. It was during his youth that he started to develop a taste for discovery. Exploring the once-pristine Tampa Bay area landscape led to a deep curiosity of his new home's past and the people who once thrived here.

Working as an interpretative park ranger for 28 years, Trappman has devoted his adult life to the study of Florida's first natives. His artwork is based on hands-on experience, constructing tools and weapons, researching scientific data, and the meticulous study of known facts. His goal is to build an understanding of America's past with a focus on Florida's original inhabitants and their unique and distinct culture.

This exhibition will remain in the Third Floor Gallery through September 26th and is included with regular admission to the History Center.

Florida International Museum is Closing

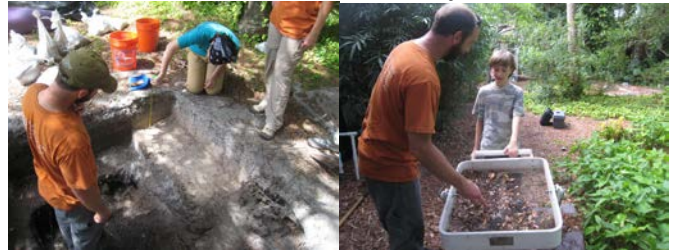
The Florida International Museum in downtown St. Petersburg will close at the end of December.

St. Petersburg College, which now owns and operates the facility, needs the room for its expanding student population.

The Museum that has been a main part of St. Petersburg opened in 1995 in an old department store. It has hosted many major exhibits over the years that attracted several hundred thousand visitors. The museum moved in 2006 to a smaller space at St. Petersburg College and in 2008 the college took over its operation.

Over the years, as the era of blockbuster shows fell from favor due to high production costs, the museum struggled to find exhibitions and audiences to fill its large space. This was made more difficult since the museum has no permanent collection of its own.

Driftwood Survey



Cistern Excavation

Jeff and Matthew Jensen on the Screen

CGCAS has been assisting FPAN in a survey of this historic area in St. Petersburg. FPAN has been working at the site on Thursdays and Saturdays. Initial excavation has been done on a possible cistern in the Mullet Farm yard and will continue throughout the month. Currently there is an opportunity to do shovel tests and other investigations in the area. For further information, contact Jeff Moates at jmoates@cas.usf.edu.

Boy Scout Program at Brooker Creek



On July 24 Brooker Creek Preserve and CGCAS will hold a hands-on opportunity to earn the Scout Archaeology Merit Badge through a workshop. The morning workshop is packed full of activities to satisfy most of the merit badge requirements. Activities include "Sifting through the Past," exploring a modern trash heap, creating pottery, and learning about area archeological sites. A portion of the cost for this program will go to CGCAS.

FAS Membership

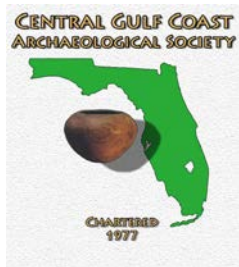
The Florida Anthropological Society (FAS) is open to persons interested in anthropology, archaeology, preservation of cultural resources and community education. Membership is made up of both professional and avocational archaeologists. Benefits of membership include the journal *The Florida Anthropologist*, the *FAS Newsletter* and participation in the annual meeting in May. More information and membership forms can be found on the web site www.fasweb.org or by writing to the Membership Secretary at P.O. Box 13191, Pensacola, FL 32591. Dues are: Student - \$15; Regular and Institutional - \$30; Family - \$35; Sustaining - \$100; Patron - \$1000; Benefactor - \$2500 or more.

CGCAS Officers/Directors

President	Karin Lovik	1225 Jeffords St. Apt 225A, Clearwater, FL	(727)543-6912
Vice Pres	Bob Austin	P.O. Box 2818, Riverview, FL 33568	(813)677-2280
Secretary	Linda Allred	5251 42 nd Ave N., St. Petersburg, Fl 33709	(727)526-7885
Treasurer	Cheryl Shaughnessy	6100 62 nd Ave. N, Lot63, Pinellas Park, 33781	(727)772-6758
Directors	Bart McLeod	2412 Butte Ave., New Port Richey, FL 34653	(727)815-8749
	Marcie Connors	19327 Wind Dancer St., Lutz, FL 33558	(813)920-4198
	Jeff Moates	624 19 th St. W, Bradenton, FL 35205	(813)396-2325
	Chris Hardy	11924 Cypress Crest Cir., Tampa, Fl 33626	(813)920-2353
	Sheila Stewart	2130 Burlingtin Ave. N., St. Petersburg, Fl 33713	(727)894-2832
	Cindy Martin	3412 Forest Bridge Cir., Brandon, Fl 33511	(813)654-4828
	Membership	Karin Lovik	1225 Jeffords St. Apt. 225A, Clearwater, Fl
Web Master	Diane Kloetzer	5380 Memorial Highway, Apt. 701, Tampa, Fl 33615	(813)281-9662
Newsletter	David Burns	15128 Springview St, Tampa, FL 33624	(813)968-7910
		e-mail: daveburns@prodigy.net	
Editorial Assistants	Dorrine Burns and Bob Austin		

The Society

Central Gulf Coast Archaeological Society (CGCAS) is an association of amateur and professional archaeologists and concerned citizens dedicated to the preservation and interpretation of Florida's great cultural heritage. CGCAS is a chapter of the Florida Anthropological Society (FAS) and is a state chartered non-profit organization. All contributions are tax deductible.



Central Gulf Coast Archaeological Society

P.O. Box 1563,
Pinellas Park, FL 33780-1563

Membership

Membership is open to anyone with a sincere interest in the cultural past of Florida and who is dedicated to the understanding and preservation of that heritage

Amateurs, professionals and concerned citizens are welcomed as members. Membership is yearly and all dues are payable in January. Contact Karin Lovik, 1225 Jeffords St., Apt 225A, Clearwater, FL.

Dues

Regular	\$20.00
Student	10.00
Family	25.00
Life	150.00

