
CENTRAL GULF COAST ARCHAEOLOGICAL SOCIETY

A CHAPTER OF THE FLORIDA ANTHROPOLOGICAL SOCIETY

WWW.CGCAS.ORG

CENTRAL GULF COAST
ARCHAEOLOGICAL SOCIETY



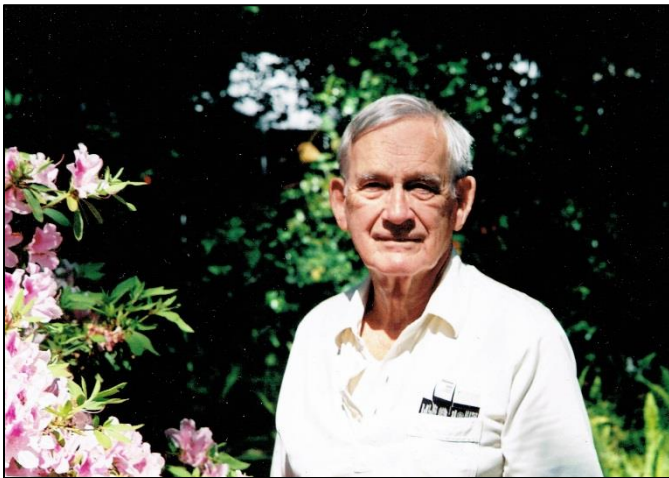
MONTHLY NEWSLETTER
JULY, 2017



39 YEARS OF PROMOTING FLORIDA'S RICH HERITAGE

EDITOR: BECKY O'SULLIVAN

REMEMBERING JODI BRINTON



Joseph "Jodi" Brinton passed away in March, an excerpt from his obituary is below. Jodi was a long-time CGCAS member, and his kindness and curiosity will surely be missed by all of us. He researched many archaeological sites within Florida, and bequeathed his papers and research material to CGCAS upon his passing. To read more of his obituary, or leave your condolences, go to: <http://www.lawrencefuneralhome.com/obituary?id=1710813>

Joseph Porter Brinton III of Gulfport, Florida died peacefully on March 10, 2017 at Menorah Manor Nursing Home in St. Petersburg, Florida. Born in Mt. Kisco, New York on June 25, 1925, he was the son of Alice Madge Curnock Brinton Middleton and Joseph P. Brinton, Jr.

Blessed with a warm and generous heart, as well as a prodigious memory and a keen intellect,

Mr. Brinton was a writer, researcher, historian and philanthropist. He pursued such varied interests as archaeology, the ballet, the cinema, thoroughbred horse racing, and finance, and was a lifelong supporter of the Arts and of environmental groups.

Joseph grew up in Bronxville, NY, and was a graduate of Bronxville High School, Class of 1942. From 1943 through 1945, he served in the American Field Service as an ambulance driver in the Italian Campaign of the Second World War, beginning at the long siege of Monte Cassino.

After 1945, Mr. Brinton resided for long periods in Manhattan; Howard Beach, Queens; Saratoga Springs NY; and Coral Gables FL, before relocating to St. Petersburg in 1980. In 1986, he found his ideal retirement location in Gulfport, where he remained the rest of his life.

Here he vigorously pursued his lifelong interest in the history and archaeology of Florida, in particular the study of Florida's Native Inhabitants. He paid countless visits to Indian mounds throughout the state and studied original documents from the colonial period, in both English and Spanish. His meticulous and thoughtful research has contributed to our understanding of the history of that time. Joe was an active member of the Florida Archaeological Society.

Joseph will be interred in the Brinton family plot in Lime Rock Cemetery, Connecticut, and a Remembrance ceremony will take place at a later date.

OFFICIAL 2017-2018 SLATE OF
BOARD MEMBERS

At the CGCAS picnic we voted to approve a new slate of board members. Please welcome Heather Draskovich and Jamie Rodgers as our newest Directors!

President: Becky O’Sullivan
Vice President: Tom Connors
Secretary: Linda Allred
Treasurer: Cheryl Shaughnessy
Membership: Kassie Kemp
Directors: Marcie Connors
Dave Burns
Chris Hardy
Michael Mann
Heather Draskovich
Jamie Rogers

CGCAS PICNIC RECAP

A fun time was had by all at the annual CGCAS picnic, held this year at John S. Taylor Park in Largo. After voting to approve our new slate of officers we all enjoyed some delicious food together. After that, a few people tested out the disc golf course while the rest of us tried our hands at the atlatl. Thanks so much to all the members who made it out. It was great to see some familiar faces, as well as a bunch of new ones!



Ryan Harke tries to dislodge an atlatl dart from a palm tree at the CGCAS picnic.



“Jungle Jay” saved the day and knocked the dart out of the tree!



A few CGCAS members try out the disc golf course at John S. Taylor Park in Largo during the annual picnic.

VOLUNTEERS NEEDED

Saturday, July 15th we are looking for volunteers to help open up a unit at Weedon Island for the Junior Archaeologist camp the following two weeks. If you are interested in helping out, email Bob at roc_doc@verizon.net. We will also need help closing up the unit on Saturday, July 29th.

For those interested in helping out on the excavation days at Junior Archaeologist camp (Thursday July 20th and 27th) please contact Becky at rosulliv@usf.edu. Your help is appreciated!

UPCOMING ARCHAEOLOGY EVENTS

Tap Talks: Maduro Brown Ale

Tuesday, July 18, 2017 from 6:30 – 7:30pm

From a town with fewer than 1,000 residents to a multi-cultural metropolis cranking out millions of cigars each year, hear about the industry that earned Tampa the name “Cigar City.” Tap Talks feature History Center Curator, Rodney Kite-Powell, and Cigar City Brewing’s El Lector, Neil Callaghan, for a look at the history behind the brew. \$10 includes the presentation and a pint of Maduro Brown Ale. Proceeds benefit the Tampa Bay History Center. Space is limited. Register at the link below or at www.cigarcitybrewing.com.

WHERE: Cigar City Brewing
3924 W Spruce St
Tampa, Florida

Ah-Tah-Thi-Ki Seminole Museum 20th Anniversary

Monday, August 21st, 2017 from 9:00am – 5:00pm

August 21, 2017 is our 20th anniversary date. Free Admission! Stop by anytime this year for a 20th Anniversary snapshot at our special photo-op in the front lobby, and post it here. Be part of history! Check out the Event Discussion for images. <http://www.ahtahthiki.com/about/museum-history/>

WHERE: Ah-Tah-Thi-Ki Seminole Museum
34725 W Boundary Rd
Clewiston, Florida 33440

Gateways to the Caribbean: Mapping the Florida-Cuba Connection

July 1, 2017 – January 28, 2018



For some, the connections between Florida and Cuba begin with Fidel Castro’s takeover in 1959. For others, especially in Tampa, they begin 70 years earlier with the arrival of the cigar industry and the founding of Ybor City in 1886. Or, maybe it was back in the 1850s when the McKay family started shipping cattle from Tampa’s Ballast Point to Havana.

However, in “Gateways to the Caribbean: Mapping the Florida-Cuba Connection,” you’ll find an unbroken thread between the Sunshine State and the island nation dating back nearly 500 years.

On view through January 28, “Gateways to the Caribbean” charts five centuries of connections and interaction between Florida and Cuba through rare and original maps, lithographs and other documents.

In total, the more than 50 maps that make up “Gateways to the Caribbean” highlight the Spanish and British occupations of Cuba and Florida in the 15th and 18th centuries, the development of rail and steam ship lines that fostered trade and travel in the 19th and early 20th centuries, and tourist maps of Cuba printed both in the 1930s and as recently as 2016.

Also included in the exhibit are a collection of color lithographs depicting the British attack on Havana in 1762, in which they seized control of the island and wrested Florida away from Spain; a print by Cuban artist Ibrahim Miranda, created at the University of South Florida’s Graphics Studio in 2012; and several tourists and travel maps, on loan to the History Center from HistoryMiami in South Florida.

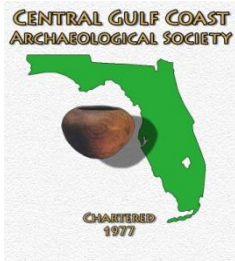
WHERE: Tampa Bay History Center
801 Old Water Street
Tampa, FL

CGCAS OFFICERS\DIRECTORS

President	Becky O' Sullivan	rosulliv@usf.edu
Vice Pres.	Tom Connors	tjconnors@verizon.net
Secretary	Linda Allred	all@tampabay.rr.com
Treasurer	Cheryl Shaughnessy	shaughnc@me.com
Directors	Marcie Connors	tjconnors@verizon.net
	Heather Draskovich	hdraskovich@mail.usf.edu
	Kassie Kemp	kkemp@usf.edu
	Dave Burns	dbburns73@gmail.com
	Chris Hardy	kasotagirl@yahoo.com
	Jamie Rogers	jaimerogers@knights.ucf.edu
	Michael Mann	mannzilla@gmail.com
Membership	Kassie Kemp	
Web Master	Dawn Hayes	
Newsletter	Becky O' Sullivan	E-mail: rosulliv@usf.edu
Editorial Assistants	Bob Austin, Dave Burns	

THE SOCIETY

The Central Gulf Coast Archaeological Society (CGCAS) is an association of amateur and professional archaeologists and concerned citizens dedicated to the preservation and interpretation of Florida's great cultural heritage. CGCAS is a chapter of the Florida Anthropological Society (FAS) and is a state chartered non-profit organization. All contributions are tax deductible.



MEMBERSHIP

Membership is open to anyone with a sincere interest in the cultural past of Florida and who is dedicated to the understanding and preservation of that heritage.

Amateurs, professionals and concerned citizens are welcomed as members. Membership is yearly and all dues are payable in January. Contact Cheryl Shaughnessy at P.O. Box 1563 Pinellas Park, FL 33780

	Dues
Individual	\$25.00
Student	\$12.00
Family	\$30.00

**CENTRAL GULF COAST
ARCHAEOLOGICAL SOCIETY**
4202 E FOWLER AVE, NEC 116
TAMPA, FL 33620